



Collin Van Der Westhuizen
079 327 8332
collinvdw@renico.co.za

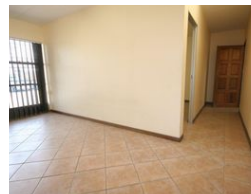
Contact Renico Construction

011 794 1177

384 Johan Road
Cnr Taylor Road
Honeydew.
2040



Web Ref CL577



R15,885 pm

Gross Monthly Rental R15,885 Excl. VAT

 0  8

Warehouse/ Factory Space in Stormill.

Secure industrial estate in Stormill with easy access to Main Reef Road and the Maraisburg/ N1 interchange. The 480 square meter warehouse consists of a tiled reception and office area with kitchenette and ablution facilities, power floated concrete floors to the warehouse with high-opening roller shutter doors and additional staff ablutions. The well kept industrial estate offers 24

Features

Zoning Industrial

Interior

Floor Loading Cap. 5 Tn/m²
Power 3 Phase Yes
Power Amps 80

Exterior

Security Yes
Open Parking Bays 8

Sizes

Floor Size 353m²
Building Height 5m

